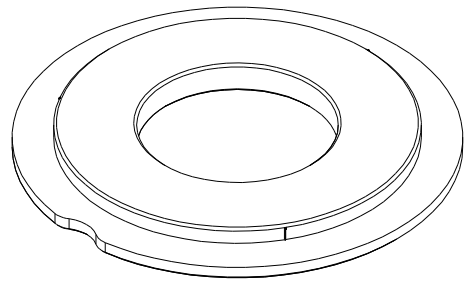
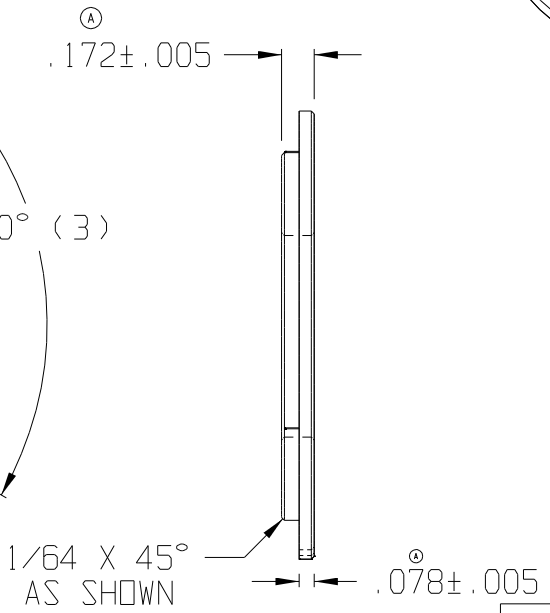
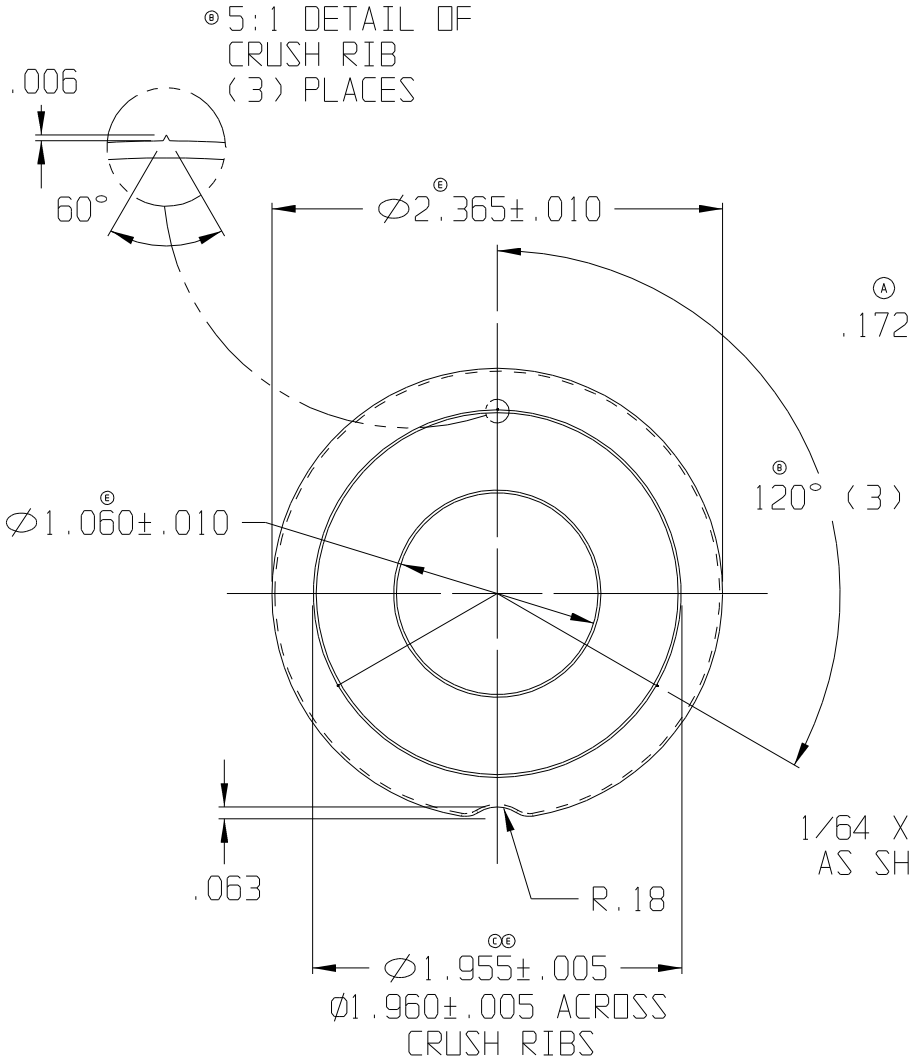


10 9 8 7 6 5 4 3 2 1

H  
G  
F  
E  
D  
C  
B  
A

H  
G  
F  
E  
D  
C  
B  
A



E	UPDATED DIMENSIONS	11/03
D	MATERIAL CHANGE FROM 6/6 NYLON	06/03
C	1.945 WAS 1.938 / ADDED 1.957 DIM.	02/03
B	ADDED 3 CRUSH RIBS	11/02
A	CHANGED FLANGE THICKNESS FROM 7/64" TO .078	10/02
REV.	DESCRIPTION	DATE

THIS DOCUMENT CONTAINS PROPRIETARY DESIGNS, SPECIFICATIONS, DATA, INFORMATION AND TECHNICAL MATERIAL THAT ARE THE SOLE PROPERTY OF AUCILLA, INC. THIS INFORMATION IS TO BE HELD AND TREATED BY ITS RECIPIENT ON A CONFIDENTIAL BASIS, AND IS NOT TO BE SHOWN OR DISCLOSED TO THIRD PARTIES WITHOUT THE WRITTEN CONSENT OF AUCILLA INC. THIS DATA DOES NOT CONVEY MANUFACTURING RIGHTS TO ANY ITEM SHOWN.



STANDARD TOLERANCES APPLY UNLESS OTHERWISE NOTED	
LINEAR INCH	ANGULAR
4 PLACE ± .0005	4 PLACE \ .0005
3 PLACE ± .001	3 PLACE \ .001
2 PLACE ± .002	2 PLACE \ .002
1 PLACE ± .005	1 PLACE \ .005
WHOLE ± .005	WHOLE \ .005

DESCRIPTION			
FLANGED WASHER			
1 1/16 ID X 2 3/8 OD X 13/64			
API NO.	DRAWN BY:	SCALE:	REV.
2571	Dittrich	1:1	E
MATERIAL	DATE:	SHEET NO.	
Minlon 12T Bk	08/02	1 of 1	

10 9 8 7 6 5 4 3 2 1